



## Eagle Disposal accepts unlimited amounts of recycling!

### Acceptable Items



REV 11/2014

#### METAL:

- Aluminum beverage cans
- Steel food & beverage cans, aerosol cans, paint cans

#### GLASS:

- Clear, brown, blue, and green glass food & beverage containers

#### PLASTIC:

- #1 through #7 – *All materials must be thoroughly cleaned before placing them in your recycle container.*

- ✓ *Remove caps/lids*
- ✓ *Rinse thoroughly to remove all contaminants*
- ✓ *It is OK to leave on labels and neck rings*

#### PAPER, PAPERBOARD & CARDBOARD:

##### Recycle Any Size. Any Quantity.

*Please break down boxes as flat as possible and put them out next to your recycle bin(s) on your pick-up day.*

- All sizes of cardboard boxes
- Clean pizza boxes
- Food boxes (i.e. cereal & gelatin boxes)
- EMPTY paper towel and toilet paper rolls
- Paperboard packaging (i.e. tissue boxes)
- Office paper (any color)
- Newspapers and inserts
- Magazines, catalogs, and brochures
- Envelopes & junk mail
- Paper bags
- Phone books & other soft cover books
- Paperboard food and drink cartons

- ✓ *Remove all packaging (Styrofoam, peanuts, plastic bubble wrap, plastic liners, etc.)*
- ✓ *Flatten ALL boxes*
- ✓ *Bundle all cardboard that does not fit into the recycling bin*
- ✓ *Cover loose paper with heavier items to prevent it from blowing away*
- ✓ *If the weather forecast calls for high winds or wet weather, if possible, keep your paper recyclables until next week. Wet paper products are difficult to process.*

# CALLING ALL CARTONS

## Eagle Disposal Now Accepts Cartons!

Cartons are defined as a type of packaging that food and beverage products come in that you can purchase at the store.

### Shelf-stable Examples

- Juice
- Milk
- Soy Milk
- Soup and Broth
- Wine



### Refrigerated Examples

- Milk
- Juice
- Cream
- Egg Substitutes

- ✓ Be sure to remove all caps and straws.
- ✓ Empty and rinse.
- ✓ Cartons may be placed in your bin along with all other recyclables.



## Follow these 3 simple steps to ensure your contaminated items are ready to be recycled:



**1** Remove caps or lids and dispose of them in the trash.



**2** Rinse thoroughly to ensure all recyclables are clean and free of contaminants.



**3** You may leave on the rings and labels.



# Non-Recyclable Items

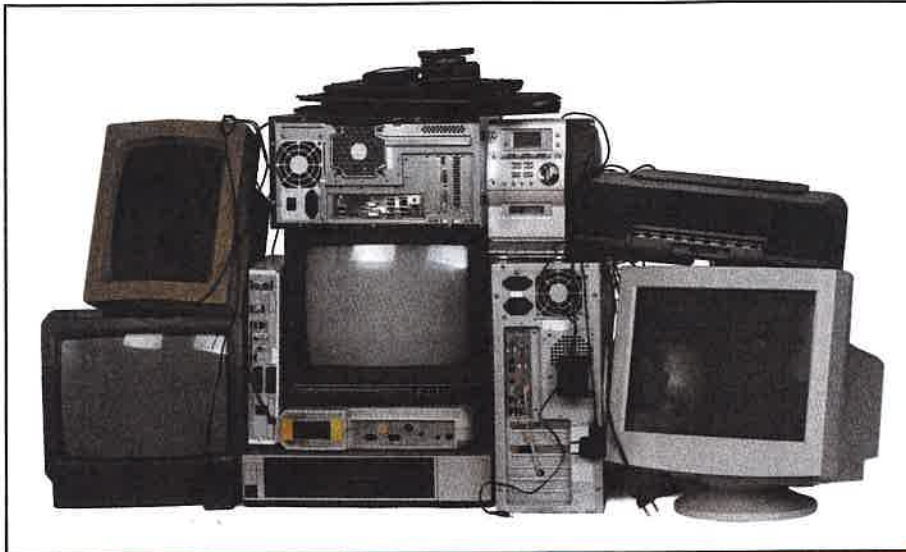
**Please do not include the following items in your recycling!**

- **Needles & Medical Waste**  
*DO NOT place used needles or any other medical waste with recycling! This is a serious health hazard to everyone!*
- Broken glass
- Windows, mirrors, ceramics
- Drinking glasses
- Aluminum foil
- Scrap metal
- Clothing hangers (metal and plastic)
- Plastic tableware (knives, forks, spoons, etc.)
- Plastic grocery bags
- Light bulbs
- Food soiled material
- Wet papers or cardboard
- Plastic food wrappers
- Shredded paper
- Used paper towels or tissues
- Styrofoam
- Pool chemicals
- Packing peanuts
- Plastic bubble wrap
- Hose
- Christmas lights
- Diapers
- Food waste
- Propane tanks

**Please do not include electronics with your recycling. For information on how to recycle outdated electronics, see inside.**



# Don't let old electronics pile up... **Learn how to dispose of them responsibly**



**The Covered Devices Recycling Act prohibits residents and businesses from placing electronic waste at the curb or in their trash.**



**By law, as of January 24, 2013, Eagle Disposal is no longer allowed to collect electronic waste.** Covered devices include: desktop computers, laptops, monitors, computer peripherals (keyboard, mouse, printer, and speakers), televisions, or e-readers that browse the internet. **Because electronic waste can contain hazardous materials that are harmful to human health and the environment, it is very important that these devices are disposed of properly.** Use the resources in the right column to learn more information about how to safely recycle your outdated electronic equipment.

*Thank You!*



## Resources for Safe Disposal of Electronics

### CHESTER

**Chester County Solid Waste  
Authority**

610-273-3771

[www.chestercountyswa.org](http://www.chestercountyswa.org)

### LANCASTER

**Lancaster County Solid Waste  
Management Authority**

717-397-9968

[www.lcswma.org](http://www.lcswma.org)

### BERKS

**Berks County Solid Waste  
Authority**

610-478-6362

[www.co.berks.pa.us/swa](http://www.co.berks.pa.us/swa)

### ADDITIONAL RESOURCES

#### Best Buy

Best Buy stores nationwide accept most electronics and large appliances, with a few exceptions, at no charge. You can drop off your electronic waste at your nearest Best Buy location – visit [www.bestbuy.com](http://www.bestbuy.com), click on the “Services” tab and then click on “Recycle Your Old Products” for additional information.

Visit [earth911.com](http://earth911.com) for additional electronics recycling resources.