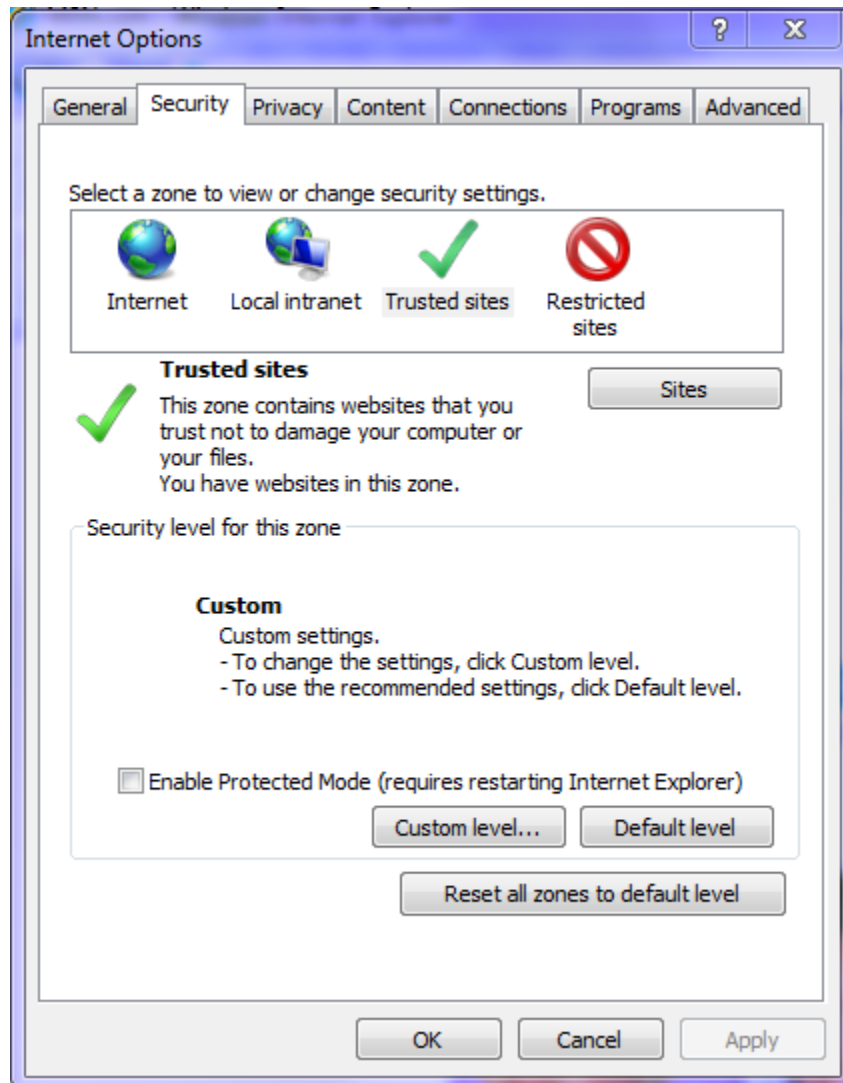
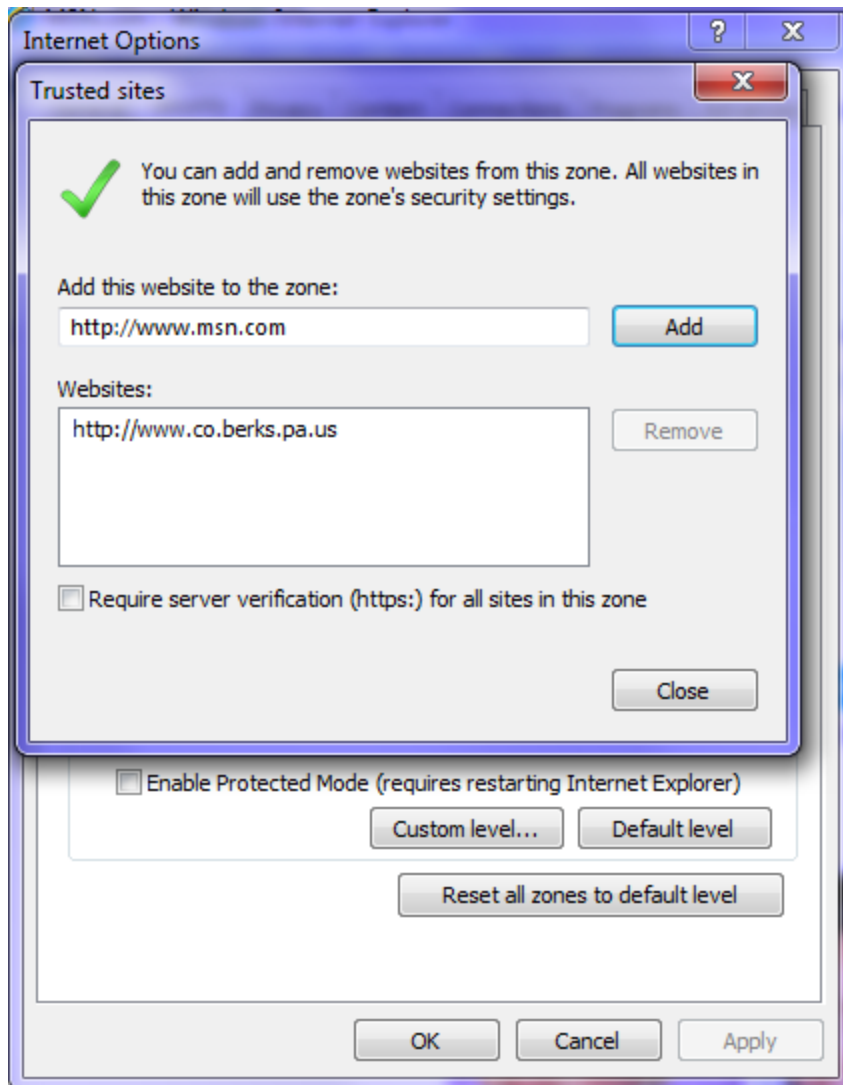


## Internet Explorer Settings for Login Issues

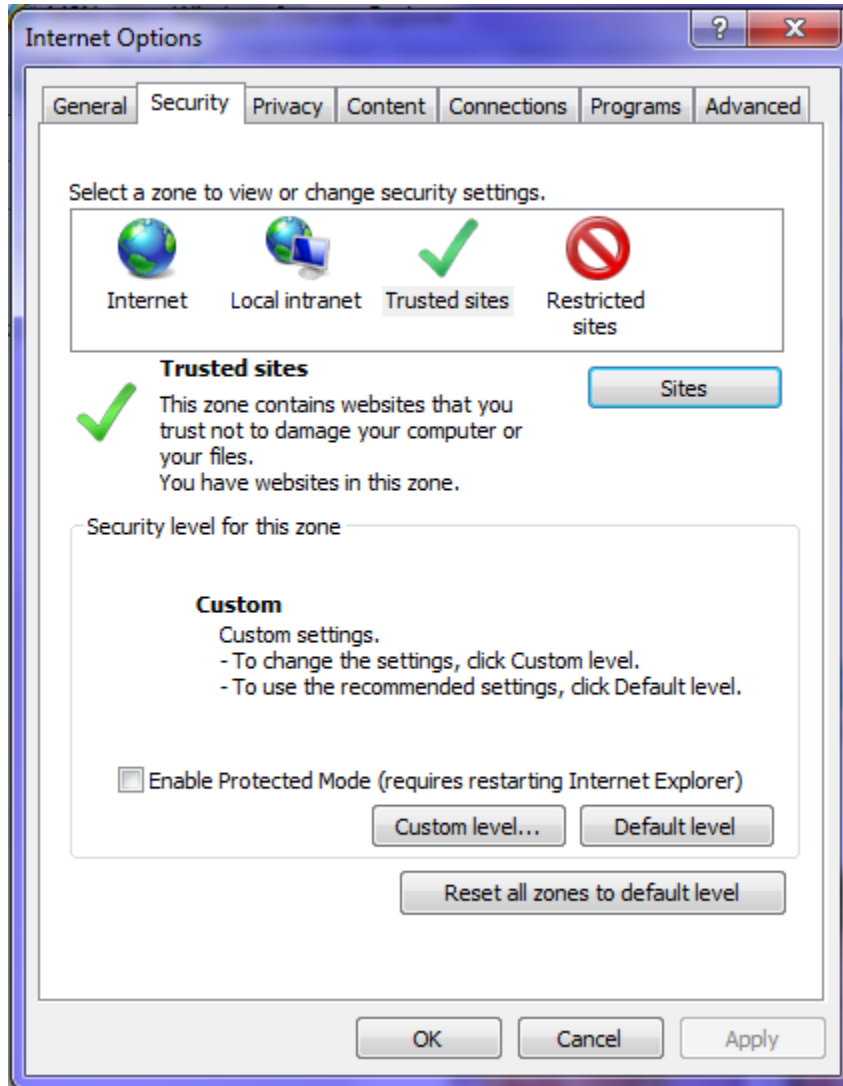
- 1) Go to IE Tools / Internet Options
- 2) Click "Security" tab
- 3) Click "Trusted sites" and then "Sites" button



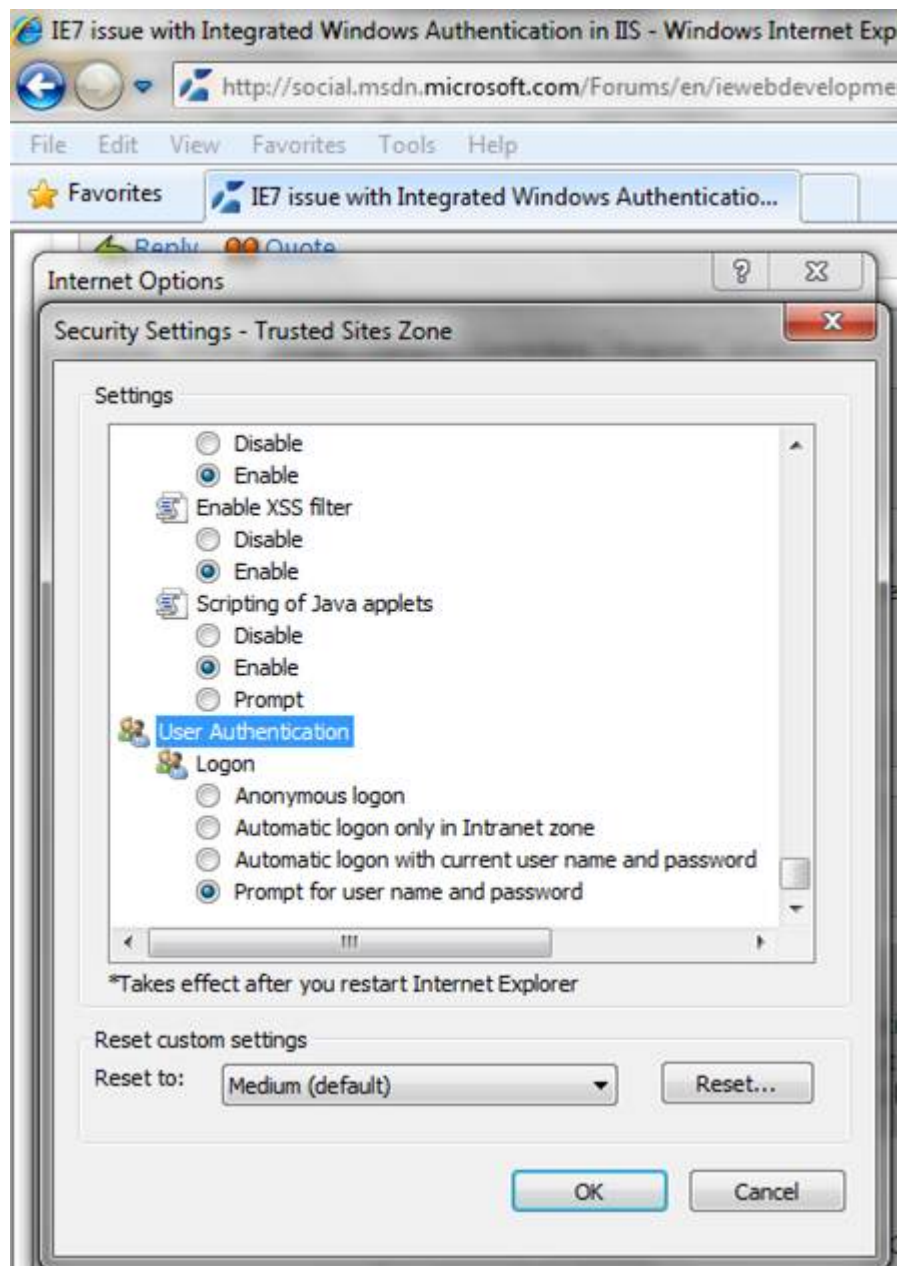
- 4) Add your website in trusted zone (co.berks.pa.us). (Make sure that the "Require server verification (https:)" box is unchecked.) and click "Close"



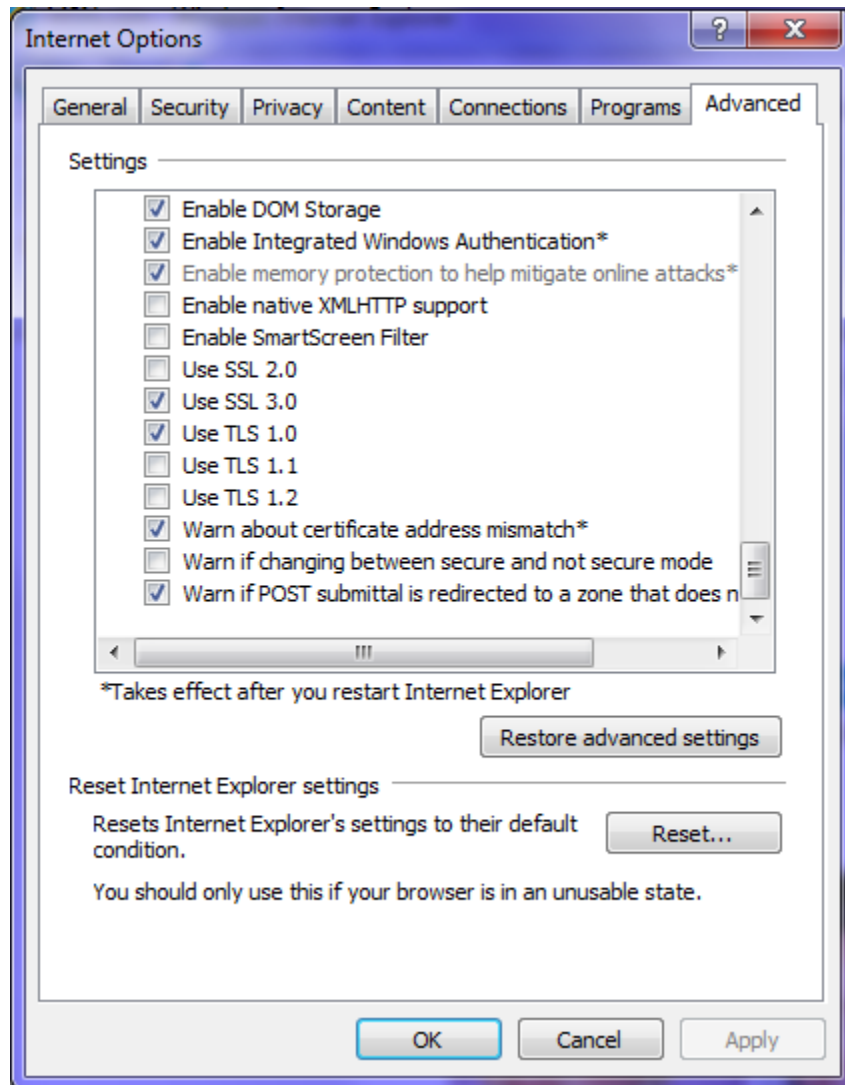
5) Click "Custom level..."



- 6) Make sure the settings for this zone are "Prompt for Username and Password" (You do not want it to be automatic as it will try to use the same authentication as your network is using and you DO NOT want that! This may help. I am thinking this may be part of the problem.) Change the setting, if necessary, and click "Ok".



- 7) Next, choose the "Advanced" tab and scroll toward the bottom of the Settings box



- 8) Make sure "Enable native XMLHTTP support" is unchecked. If not, uncheck the box, click "Apply" or "OK"