

N382500

E2570000

2

1

0

E2567500

N380000

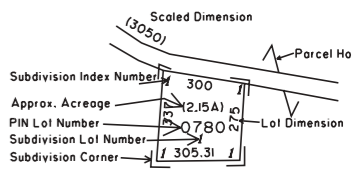
7

8

9

PROPERTY MAP
OF
BERKS COUNTY
PENNSYLVANIA

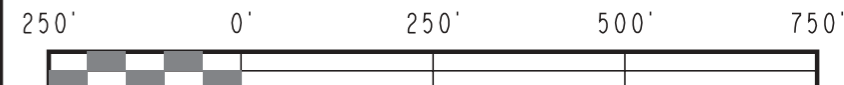
- Property Line
- Right of Way
- Interior Lot Line
- Block Grid Line
- Stream, Lake, Pond
- Municipal Boundary
- Easement
- Utility Easement



SUBDIVISION INDEX

SUBD NO	SUBDIVISION NAME	PLAT BOOK	PAGE	CODE
1	LONGVIEW ROAD	78	04	2483
2	MOUNTAIN TOP ESTATES	211	33	9625

DISCLAIMER: This map is intended for property tax assessment purposes only. The information contained on this map is based upon recorded deeds, plans, and other public sources. These primary sources should be consulted to verify the information contained on this map. Due to conflicts, errors, and omissions in the primary sources, the tax map should be considered to be a representation of the editor's judgement, based upon the available evidence. Tax maps are not legal evidence of size, shape, location, or ownership of real estate, roads, or municipal boundaries. BERKS COUNTY ASSUMES NO LIABILITY RELATED TO THE USE OF THIS MAP. THIS MAP IS NOT A SURVEY.



6801	536802	537801	5
6803	536816	537813	53
	536804	537814	53
5367	536820	537817	53
	536702	537701	5

August 1, 2010

MAP NO. 5368 20

