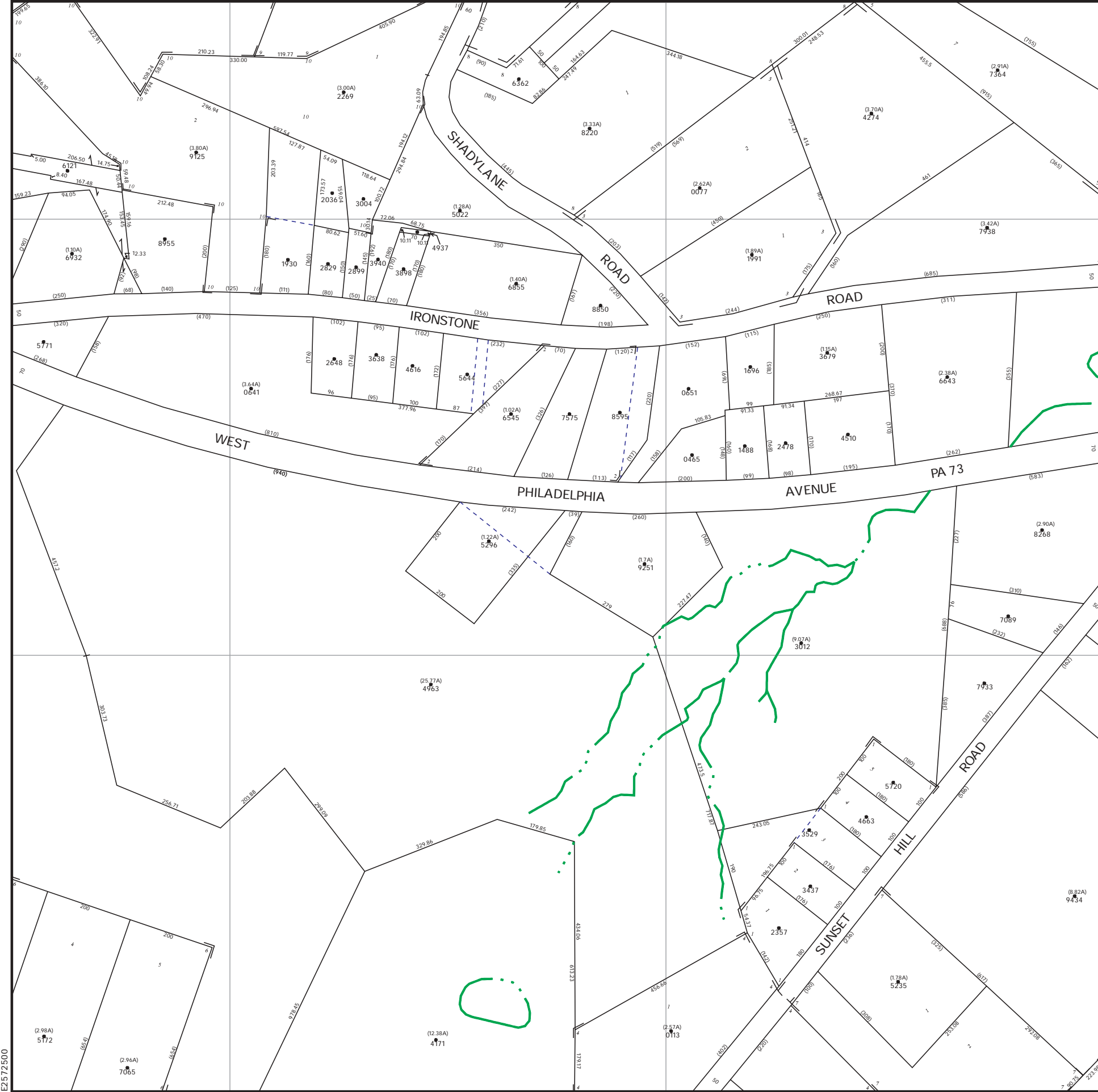
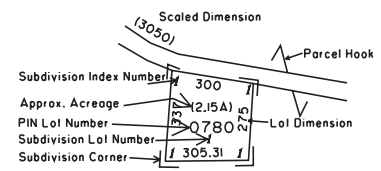


N382500

E2575000

PROPERTY MAP
OF
BERKS COUNTY
PENNSYLVANIA

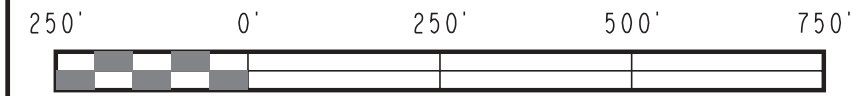
- Property Line
- Right of Way
- Interior Lot Line
- Block Grid Line
- Stream, Lake, Pond
- Municipal Boundary
- Easement
- Utility Easement



SUBDIVISION INDEX

SUBD NO	SUBDIVISION NAME	PLAT BOOK	PAGE	CODE
1	AMANDA DAVIDHEISER	29	56	0877
2	LESTER DAVIDHEISER	32	04	0987
3	GERALD P. WETZEL JR.	65	10	2124
4	FAVORG SUBDIVISION	124	26	3629
5	SHIN II (PETER J. SCHNEIDER)	125	33	3719
6	MICHAEL JR. & DIANE M. ANDRE	129	25	4059
7	SUNSET TERRACE	134	95	4564
8	"GRAU" SUBDIVISION	139	75	4998
9	WETZEL SUBDIVISION	160	16	6588
10	SAMSEL	218	23	10026

DISCLAIMER: This map is intended for property tax assessment purposes only. The information contained on this map is based upon recorded deeds, plans, and other public sources. These primary sources should be consulted to verify the information contained on this map. Due to conflicts, errors, and omissions in the primary sources, the tax map should be considered to be a representation of the editor's judgement, based upon the available evidence. Tax maps are not legal evidence of size, shape, location, or ownership of real estate, roads, or municipal boundaries. BERKS COUNTY ASSUMES NO LIABILITY RELATED TO THE USE OF THIS MAP. THIS MAP IS NOT A SURVEY.



6802	537801	537802	53			
536816	537813	537814	537815	537816	53	
6804	536820	537817	537818	537819	537820	53
6702	537701	537702	53			
					53	

August 1, 2010

MAP NO. 5378 18

E2572500
N380000

2

3

4