

N382500

2

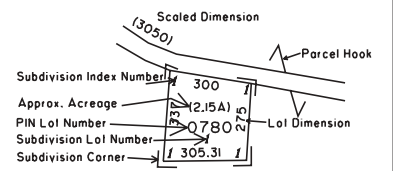
1

0

5

PROPERTY MAP
OF
BERKS COUNTY
PENNSYLVANIA

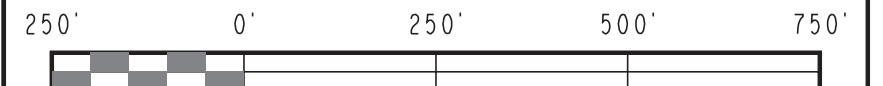
- Property Line
- Right of Way
- Interior Lot Line
- Block Grid Line
- Stream, Lake, Pond
- Municipal Boundary
- Easement
- Utility Easement



SUBDIVISION INDEX

SUBD NO	PIN	SUBDIVISION NAME	PLAT BOOK	PAGE	CODE
1		WOODYLN FARMS	71	19	2304
2		SENIJA ESTATES	75	28	2431
3		SKYVIEW	85	11	2648
4		SENIJA ESTATES II	90	18	2784
5		SPRING HOLLOW	102	4	3065
6		SENIJA ESTATES	129	13	4047
7		ALTON Y & STELLA SCHOLLENBERGER	130	37	4161
8		SKYVIEW II	139	90	5013
9		ROBERT A & MARJORIE A PENNYPACKER	151	21	5996
10		HILLTOP ROAD	161	17	6660
11		ARTHUR J & GERTRUDE M FRANK	171	40	7280
12		ALTON Y & STELLA M. SCHOLLENBERGER	198	51	8840
13		EDWARD L CRUMP	302	422	13290

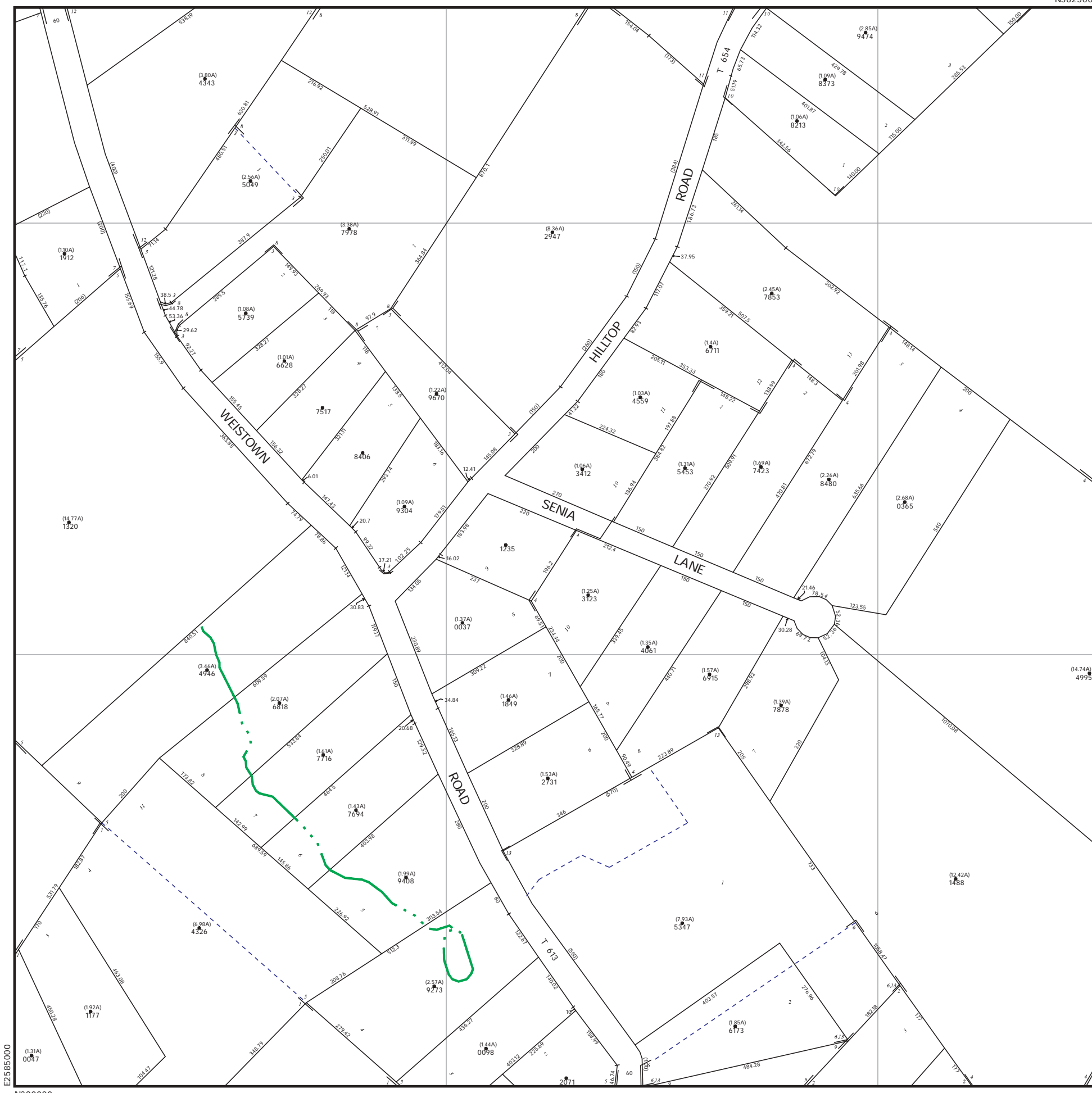
DISCLAIMER: This map is intended for property tax assessment purposes only. The information contained on this map is based upon recorded deeds, plans, and other public sources. These primary sources should be consulted to verify the information contained on this map. Due to conflicts, errors, and omissions in the primary sources, the tax map should be considered to be a representation of the editor's judgement, based upon the available evidence. Tax maps are not legal evidence of size, shape, location, or ownership of real estate, roads, or municipal boundaries. BERKS COUNTY ASSUMES NO LIABILITY RELATED TO THE USE OF THIS MAP. THIS MAP IS NOT A SURVEY.



538801	538802				
				539809	53
16	538813	538814	538815	538816	539813 53
20	538817	538818	538819	538820	539817 53
	538705	538706	538707	538708	539705 53
	538709	538710	538711	538712	539709 53

August 1, 2010

MAP NO. 5388 19



E2585000
N380000

5

6

7