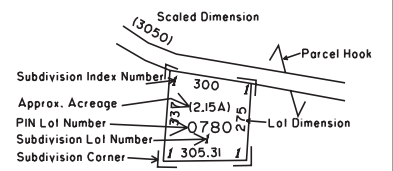


4
3
2
1
0
5
6
7
8
9

PROPERTY MAP
OF
BERKS COUNTY
PENNSYLVANIA

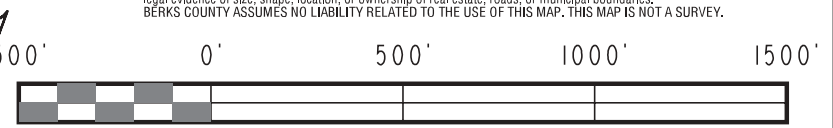
- Property Line
- Right of Way
- Interior Lot Line
- Block Grid Line
- Stream, Lake, Pond
- Municipal Boundary
- Easement
- Utility Easement



SUBDIVISION INDEX

SUBD NO	SUBDIVISION NAME	PLAT BOOK	PAGE	CODE
1	ROCKLAND ACRES	033	21	1106
2	IVY CREST	038	07	1384
3	MINX	058	13	1938
4	IVY CREST II	059	22	1971
5	MINA	069	13	2241
6	HERO	070	23	2279
7	SPALL II	078	06	2485
8	JEROME LENDACKI	090	24	2790
9	MERE	112	15	3324
10	LOB	123	04	3567
11	LOB II	123	17	3580
12	ROBERT PATTERSON	126	54	3834
13	NYZE	148	89	5799
14	HAJE II	153	48	6170
15	HATI	169	49	7135
16	RAIN	174	62	7514
17	SYLR	169	50	7136
18	RAIN II	184	01	7958
19	HIGHVIEW	187	42	8159
20	PATS	187	43	8160
21	RAIN II	199	16	8866
22	NORTHBRIDGE	206	07	9294
23	MILL	207	24	9369
24	NORTHBRIDGE II	207	46	9391
25	HATI II	219	34	10086
26	PATS	223	32	10342
27	SAFE	226	40	10557
28	HASSLER	242	04	11361
29	SHAD SUBDIVISION	052	17	1773
30	ROCKLAND RIDGE	269	38	12579
31	ROCKLAND MANOR ESTATES	271	80	12687
32	STONEFIELD HEIGHTS	303	445	13412
33	AMERICA ONE HOMES	305	33	13583
34	RONALD L & BARBARA L RICHARD	308	250	13982

DISCLAIMER: This map is intended for property tax assessment purposes only. The information contained on this map is based upon recorded deeds, plans, and other public sources. These primary sources should be consulted to verify the information contained on this map. Due to conflicts, errors, and omissions in the primary sources, the tax map should be considered to be a representation of the editor's judgement, based upon the available evidence. Tax maps are not legal evidence of size, shape, location, or ownership of real estate, roads, or municipal boundaries. BERKS COUNTY ASSUMES NO LIABILITY RELATED TO THE USE OF THIS MAP. THIS MAP IS NOT A SURVEY.



102	545101	545102	5461
104	545103	545104	
002	545001	545002	5460
004	545003	545004	

August 1, 2010

MAP NO. 545104

