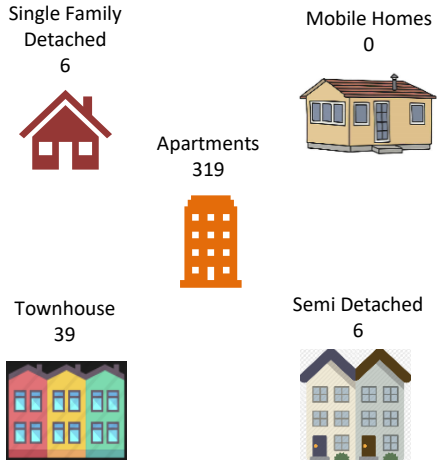
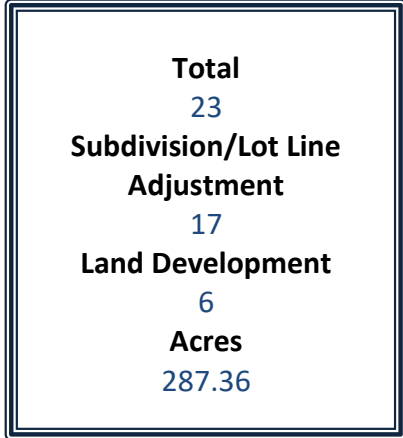


### Types of New Development

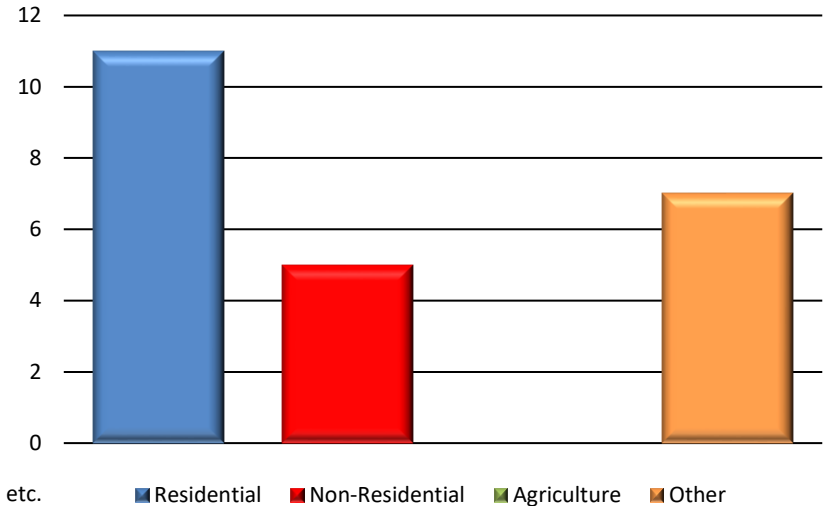
#### Housing: 370 Total Units



### Type of Plans Reviewed



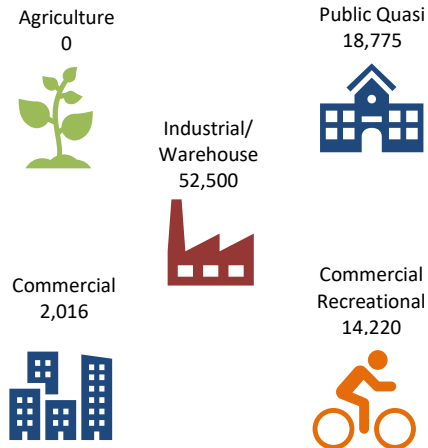
### Plans Reviewed



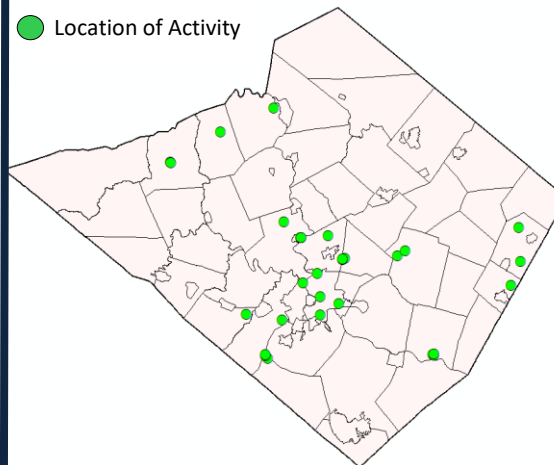
\*Other includes Annexations, Municipal, Recreation, etc.

\*Please refer to Monthly Subdivision Review Activity Report for details.

### Non-Residential: 87,511 Total Square Feet



### Location of Activity



### Year in Review: June – July 2022

