



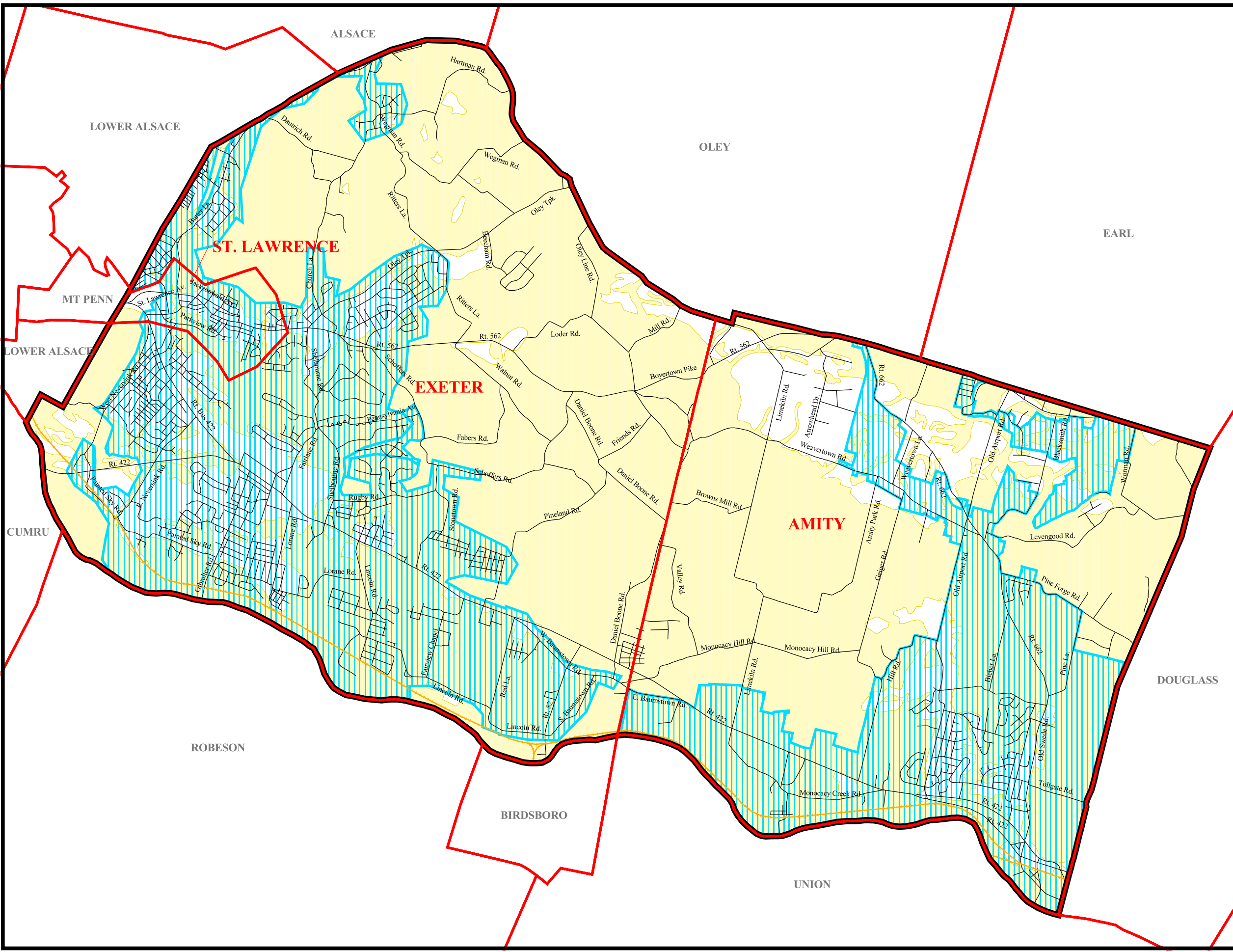


*Existing and Proposed Sewer Facilities and Soil Suitability Map,
The Joint Comprehensive Plan
For St. Lawrence, Exeter and Amity,
Berks County*

-  Railroads
-  Sewer Service Areas
-  Septic Soil Suitability
-  Severe Limitations



Data source: Berks County GIS and SSM



Spotts, Stevens and McCoy, Inc.
1047 N. Park Rd.
Reading, PA 19610-0307
Tel: 610-621-2000 Fax: 610-376-6950

09/20/01

g:\projects\w6000\w6128\
w6128004\projects\
w6128_004.apr