




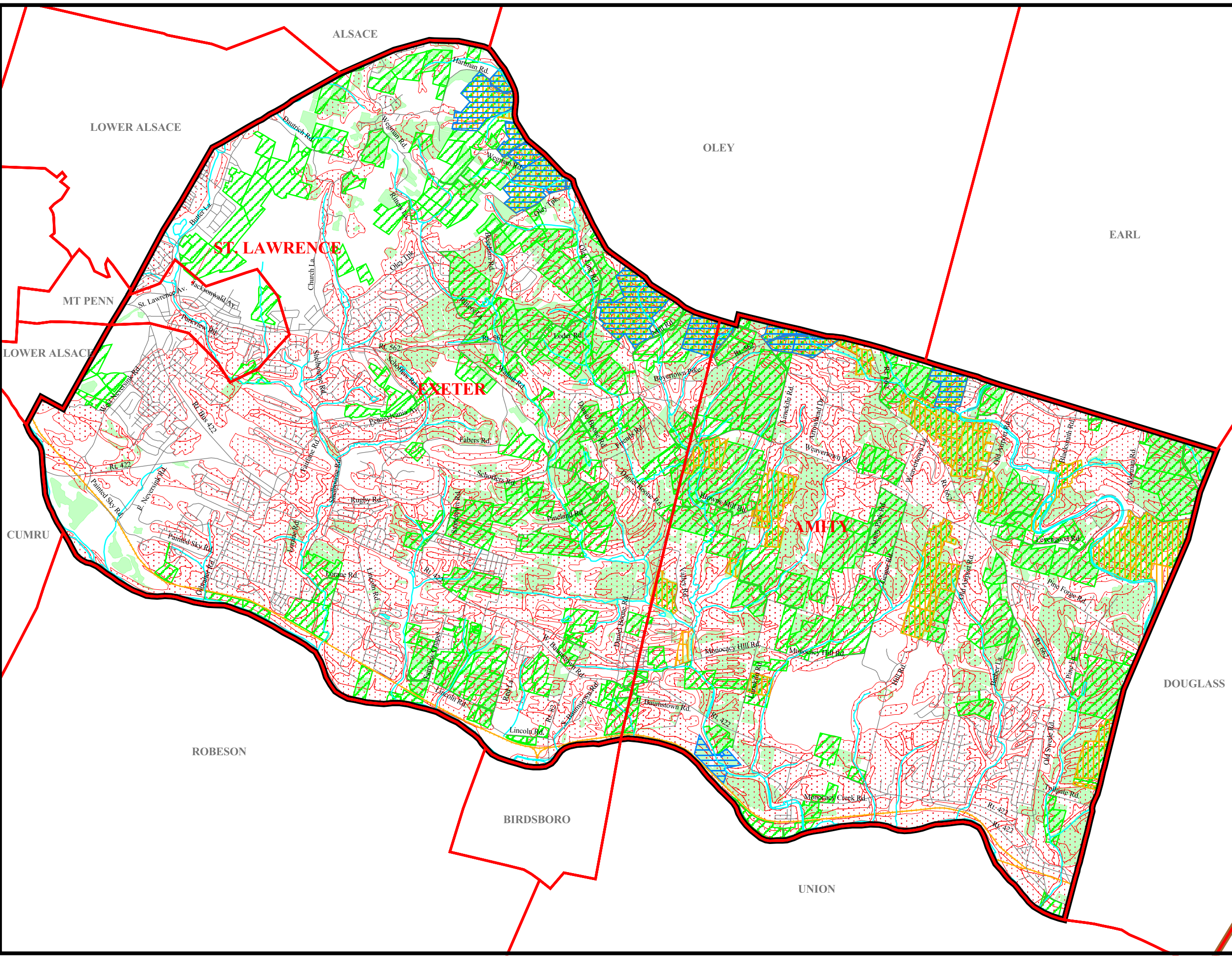


**Agricultural Security Areas,
Conservation Easements, and
Clean and Green Lands Map,
The Joint Comprehensive Plan
For St. Lawrence, Exeter and Amity,
Berks County**

-  Conservation Easements
-  Agricultural Security Areas
-  Clean and Green Lands
-  Prime Agricultural Soils
-  Farmed Land



0 2 Miles

Data source: Berks County GIS and SSM



Spotts, Stevens and McCoy, Inc.
1047 N. Park Rd.
Reading, PA 19610-0307
Tel: 610-621-2000 Fax: 610-376-6950

09/14/01

g:\projects\w6000\w6128\
w6128004\projects\
w6128_004.apr