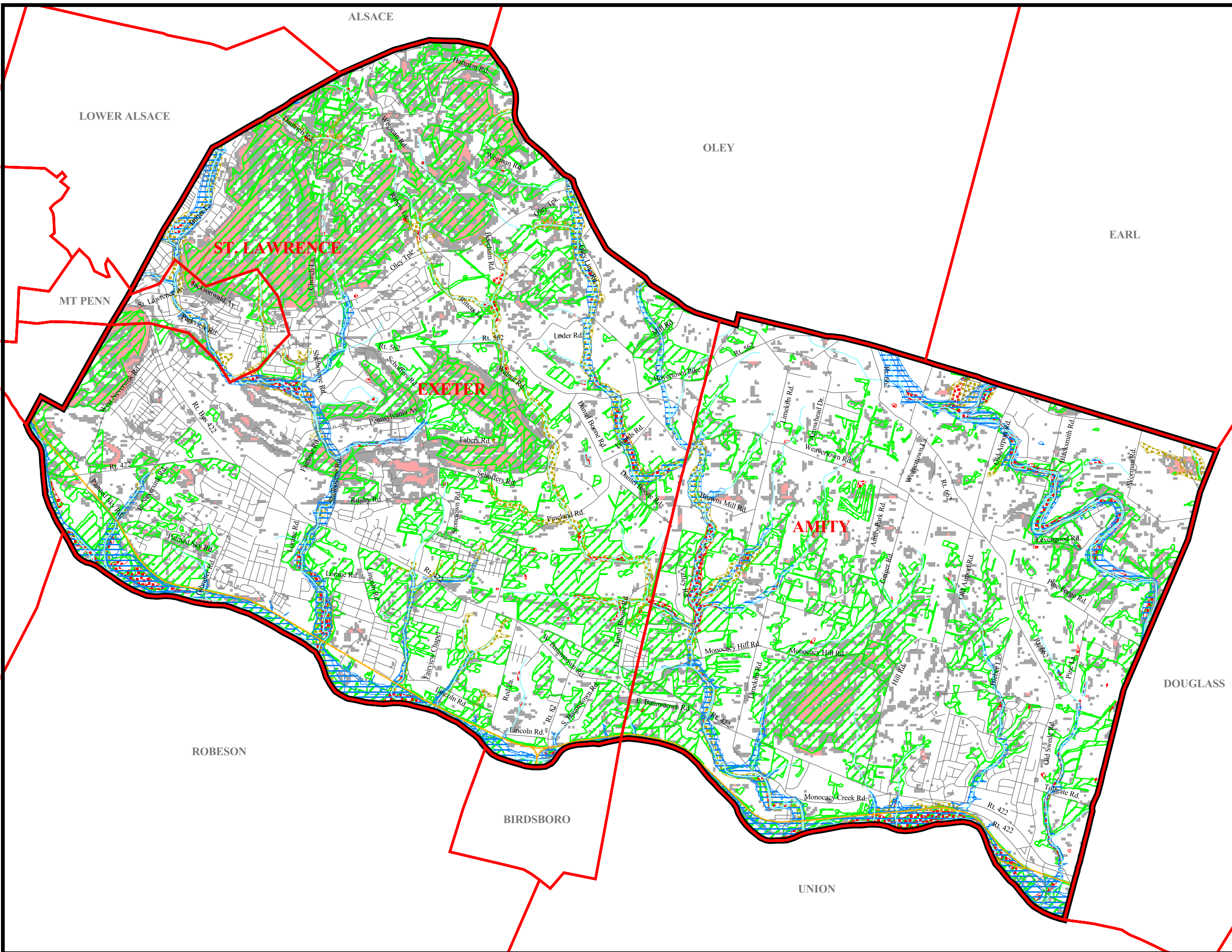


*Natural Resources Map,
The Joint Comprehensive Plan
For St. Lawrence, Exeter and Amity,
Berks County*



- Railroads
- Streams
- Floodplains
- Wetlands
- Hydric Soils
- Woodland
- Slope
 - 15% - 25%
 - > 25%



Data source: Berks County GIS and SSM



Spotts, Stevens and McCoy, Inc.
1047 N. Park Rd.
Reading, PA 19610-0307
Tel: 610-621-2000 Fax: 610-376-6950

02/28/02

g:\projects\w6000\w6128\
w6128004\projects\
w6128_004.apr