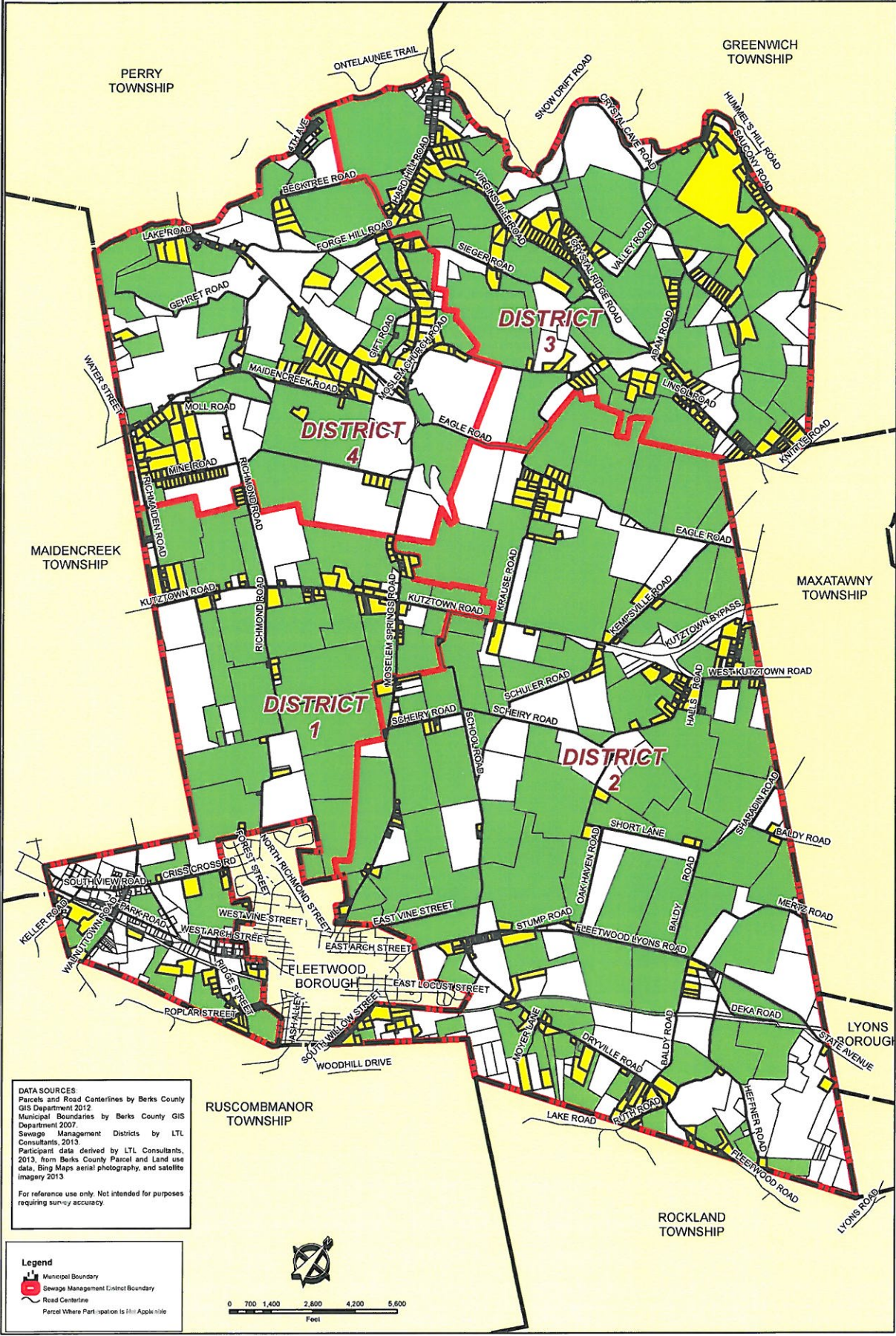


# ON-LOT MANAGEMENT DISTRICTS AND PROGRAM PARTICIPANTS

## RICHMOND TOWNSHIP, BERKS COUNTY



**DATA SOURCES:**  
 Parcels and Road Centerlines by Berks County GIS Department 2012  
 Municipal Boundaries by Berks County GIS Department 2007  
 Sewage Management Districts by LTL Consultants, 2013  
 Participant data derived by LTL Consultants, 2013, from Berks County Parcel and Land use data, Bing Maps aerial photography, and satellite imagery 2013

*For reference use only. Not intended for purposes requiring survey accuracy.*

**Legend**

- Municipal Boundary
- Sewage Management District Boundary
- Road Centerline
- Parcel Where Participation is Not Applicable

