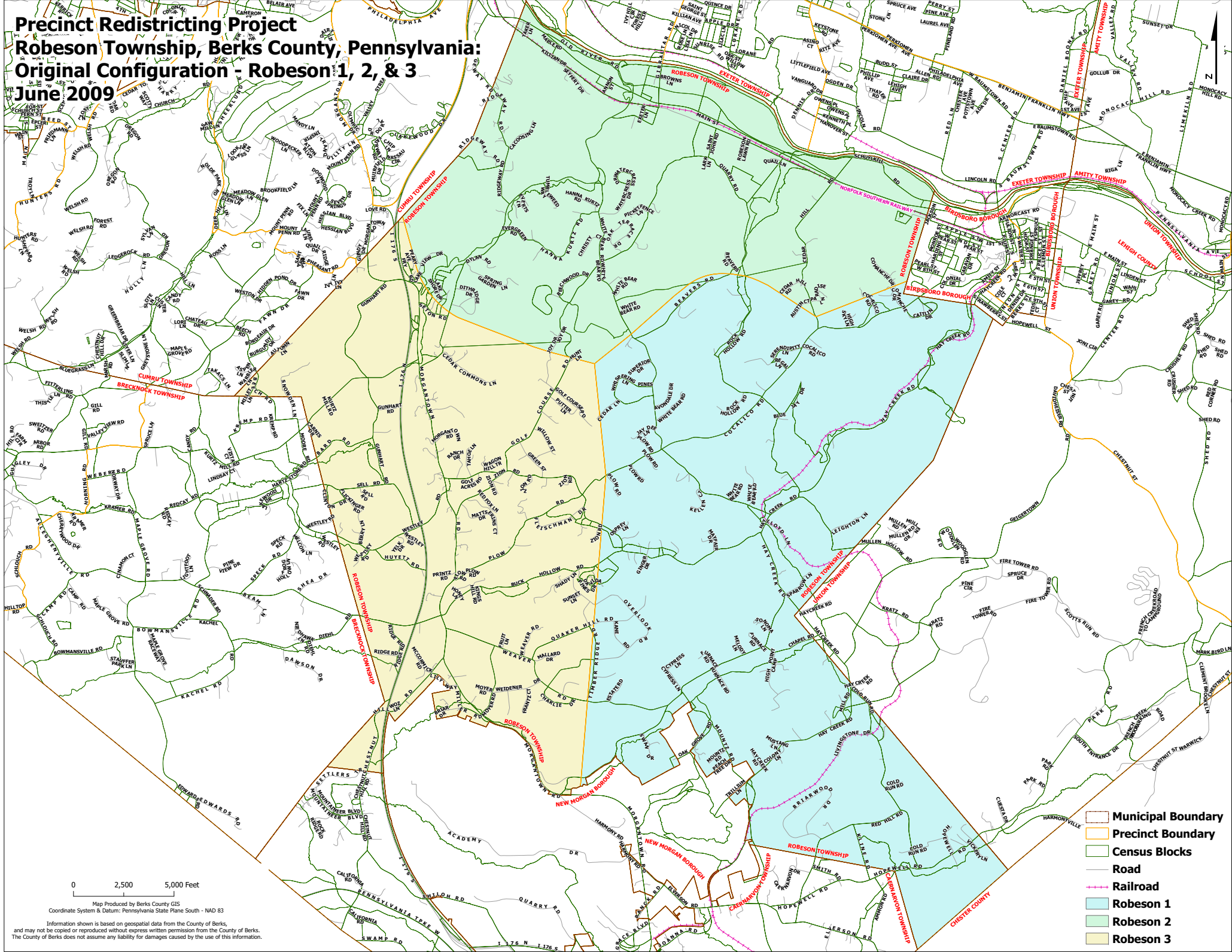


Precinct Redistricting Project

Robeson Township, Berks County, Pennsylvania:

Original Configuration - Robeson 1, 2, & 3

June 2009



0 2,500 5,000 Feet

Map Produced by Berks County GIS
 Coordinate System & Datum: Pennsylvania State Plane South - NAD 83

Information shown is based on geospatial data from the County of Berks, and may not be copied or reproduced without express written permission from the County of Berks. The County of Berks does not assume any liability for damages caused by the use of this information.

- Municipal Boundary
- Precinct Boundary
- Census Blocks
- Road
- Railroad
- Robeson 1
- Robeson 2
- Robeson 3