



EAGLE DISPOSAL

Recycling Guidelines *for Your Home*

Welcome to Eagle Disposal!

We're very excited to be partnering with you to help create a green community together!

What are the benefits of teaming up with Eagle Disposal?

- We have incredible customer service. When you call, you will speak to a live, local customer service representative.
- We are a local company, servicing over 45,000 homes via municipal contracts in Lancaster, Berks, and Chester counties.
- As more and more customers recycle, we are able to create jobs within our community.
- Recycling is the law!

Pennsylvania Act 101

In 1988, Pennsylvania passed PA Act 101 in an effort to reduce waste and increase recycling. Act 101 requires that all municipalities within the state create waste management programs that include recycling. Under the law, commercial establishments (including schools, churches, retailers, offices, non-profits, and others) must recycle according to the plan their municipality has created.

It's Easy!

When you recycle with Eagle Disposal,
you put all your recyclables into a
specially designated container. No separation needed!

*Look inside for tips on getting started
and lists of acceptable and non-acceptable items.*

Creating a green community together.

Commercial ♦ Industrial ♦ Waste Reduction Equipment ♦ Recycling Services and Equipment

Local Company. Local Commitment.



Eagle Disposal accepts unlimited amounts of recycling!

Acceptable Items



REV 11/2014

METAL:

- Aluminum beverage cans
- Steel food & beverage cans, aerosol cans, paint cans

GLASS:

- Clear, brown, blue, and green glass food & beverage containers

PLASTIC:

- #1 through #7 – *All materials must be thoroughly cleaned before placing them in your recycle container.*

- ✓ Remove caps/lids
- ✓ Rinse thoroughly to remove all contaminants
- ✓ It is OK to leave on labels and neck rings

PAPER, PAPERBOARD & CARDBOARD:

Recycle Any Size. Any Quantity.

Please break down boxes as flat as possible and put them out next to your recycle bin(s) on your pick-up day.

- All sizes of cardboard boxes
- Clean pizza boxes
- Food boxes (i.e. cereal & gelatin boxes)
- EMPTY paper towel and toilet paper rolls
- Paperboard packaging (i.e. tissue boxes)
- Office paper (any color)
- Newspapers and inserts
- Magazines, catalogs, and brochures
- Envelopes & junk mail
- Paper bags
- Phone books & other soft cover books
- Paperboard food and drink cartons

- ✓ Remove all packaging (Styrofoam, peanuts, plastic bubble wrap, plastic liners, etc.)
- ✓ Flatten ALL boxes
- ✓ Bundle all cardboard that does not fit into the recycling bin
- ✓ Cover loose paper with heavier items to prevent it from blowing away
- ✓ If the weather forecast calls for high winds or wet weather, if possible, keep your paper recyclables until next week. Wet paper products are difficult to process.

CALLING ALL CARTONS

Eagle Disposal Now Accepts Cartons!

Cartons are defined as a type of packaging that food and beverage products come in that you can purchase at the store.

Shelf-stable Examples

- Juice •
- Milk •
- Soy Milk •
- Soup and Broth •
- Wine •



Refrigerated Examples

- Milk •
- Juice •
- Cream •
- Egg Substitutes •

- ✓ Be sure to remove all caps and straws.
- ✓ Empty and rinse.
- ✓ Cartons may be placed in your bin along with all other recyclables.



Follow these 3 simple steps to ensure your contaminated items are ready to be recycled:



1 Remove caps or lids and dispose of them in the trash.



2 Rinse thoroughly to ensure all recyclables are clean and free of contaminants.



3 You may leave on the rings and labels.

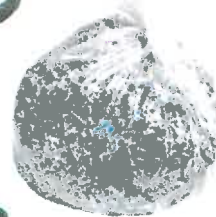
Unacceptable Recycling Items

Please do not include the following items in your recycling!

- **Needles & Medical Waste**
DO NOT place used needles or any other medical waste with recycling! This is a serious health hazard to everyone!



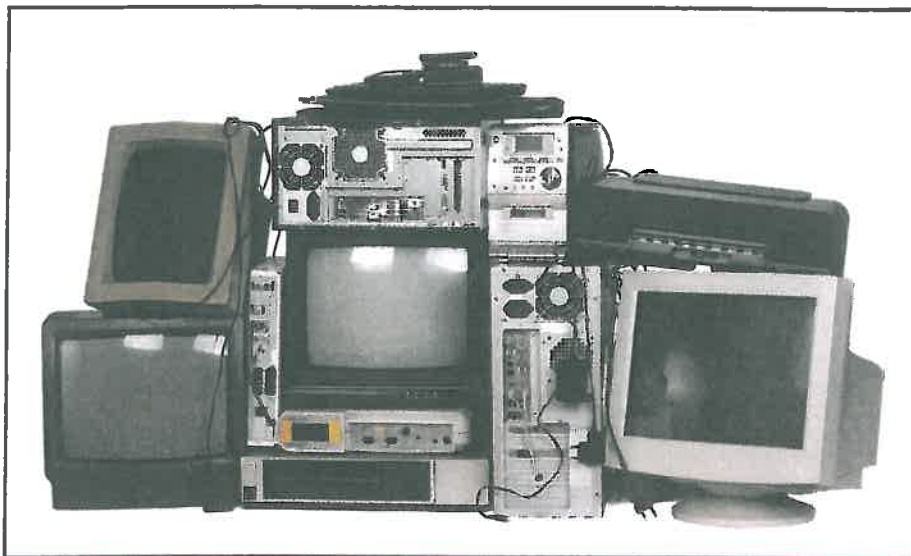
- Broken glass
- Windows, mirrors, ceramics
- Drinking glasses
- Aluminum foil
- Scrap metal
- Clothing hangers (metal and plastic)
- Plastic tableware (knives, forks, spoons, etc.)
- Plastic grocery bags
- Light bulbs
- Food soiled material
- Wet papers or cardboard
- Plastic food wrappers
- Shredded paper
- Used paper towels or tissues
- Styrofoam
- Pool chemicals
- Packing peanuts
- Plastic bubble wrap
- Hose
- Christmas lights
- Diapers
- Food waste
- Propane tanks



Please do not include electronics with your recycling. For information on how to recycle outdated electronics, see inside.



Don't let old electronics pile up... Learn how to dispose of them responsibly



The Covered Devices Recycling Act prohibits residents and businesses from placing electronic waste at the curb or in their trash.



By law, as of January 24, 2013, Eagle Disposal is no longer allowed to collect electronic waste. Covered devices include: desktop computers, laptops, monitors, computer peripherals (keyboard, mouse, printer, and speakers), televisions, or e-readers that browse the internet. **Because electronic waste can contain hazardous materials that are harmful to human health and the environment, it is very important that these devices are disposed of properly.** Use the resources in the right column to learn more information about how to safely recycle your outdated electronic equipment.

Thank You!



Resources for
Safe Disposal
of Electronics

CHESTER

Chester County Solid Waste
Authority

610-273-3771

www.chestercountyswa.org

LANCASTER

Lancaster County Solid Waste
Management Authority

717-397-9968

www.lcswma.org

BERKS

Berks County Solid Waste
Authority

610-478-6362

www.co.berks.pa.us/swa

ADDITIONAL RESOURCES

Best Buy

Best Buy stores nationwide accept most electronics and large appliances, with a few exceptions, at no charge. You can drop off your electronic waste at your nearest Best Buy location – visit www.bestbuy.com, click on the “Services” tab and then click on “Recycle Your Old Products” for additional information.

Visit earth911.com for additional electronics recycling resources.



Our Commitment to the Community

Eagle Disposal Fast Facts:

- Established in August 2002
- We collect over 25 tons of recyclables per day
- 20+ municipalities are serviced via municipal contracts
- We service over 1,000 commercial accounts
- We employ 75+
- We have a fleet of 40+ trucks

Eagle Disposal is Lancaster, Chester, and Berks Counties' premier choice for residential and commercial waste and recycling services.

We understand that preserving our world begins at the local level, and we focus on sustainable and environmentally friendly practices.

Everyone on the Eagle Disposal team, from our drivers and customer service representatives, are committed to offering first-class customer service.

- ✓ Eagle Disposal is committed to educating the community on the benefits of recycling. We strive to make the process as easy and convenient as possible to help all customers maximize their efforts.
- ✓ We are committed to supporting the communities we serve. We are proud to participate in and sponsor local events and support local causes and organizations for the continued development of the areas in which we live and work.

For more information about our company, please visit us at:
www.eagledisposal.com



1245 Eagles Way, East Earl, PA 17519 717-355-9560

Commercial ♦ Industrial ♦ Waste Reduction Equipment ♦ Recycling Services and Equipment

Local Company. Local Commitment.